



Republic of the Philippines
DEPARTMENT OF SCIENCE AND TECHNOLOGY
Philippine Atmospheric, Geophysical and
Astronomical Services Administration (PAGASA)



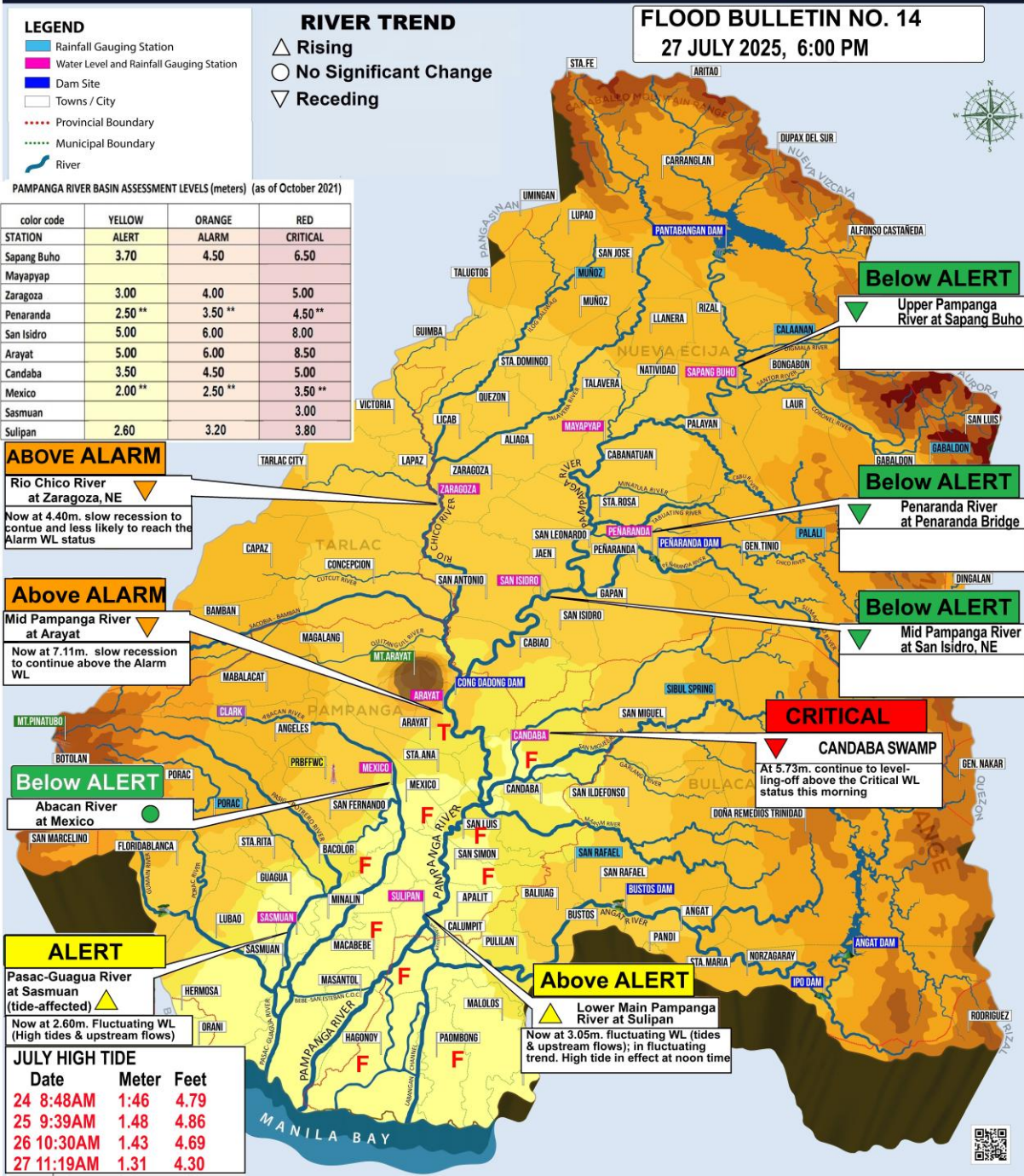
BAGONG PILIPINAS

PAMPANGA RIVER BASIN FLOOD FORECASTING & WARNING CENTER (PRFFWC)
 DMGC, Bgy. Maimpis, City of San Fernando, Pampanga 2000, CP: 0999 336 6416; prffwcffb2009@gmail.com
 websites: pagasa.dost.gov.ph / prffwc.synthasite.com

FLOOD BULLETIN NO. 14 PAMPANGA RIVER BASIN & ALLIED RIVERS ISSUED AT 6:00 PM, 27 JULY 2025 (VALID UNTIL THE NEXT BULLETIN AT 6:00 AM TOMORROW)	
Average Basin Rainfall as of time of issuance	
Past 24-hr observed	Forecast 24-hr basin rainfall
25.6 millimeters	5-20 millimeters
BASIN'S LIKELY RESPONSE / RELATED IMPACTS & AREAS LIKELY TO BE AFFECTED	
Rio Chico River at Zaragoza Station (N. Ecija)	Now at 4.40 m. still above the 4.00 m. Alarm WL; slow recession to continue and less likely to reach the Alarm WL status until tomorrow morning
Pluvial floods (Ponding of rainwater along roadways and croplands) - La Paz, Zaragoza, San Antonio; Flooding continue to persist in low-lying areas for a few days	
Pampanga River at Arayat Station (Pampanga)	Now at 7.14 m. still above the 6.00 m. Alarm WL; slow recession to continue above the Alarm WL status until tomorrow morning
Pluvial floods (slightly submerged roads, croplands) in low-lying areas within - Cabiao, Arayat, San Simon, San Luis; Flooding continue to persist in low-lying areas for a few more days	
Candaba Swamp Area at Candaba station (Pampanga)	At 5.73m. this morning, still above the 5.00 m. Critical WL; continue to levelling-off above the Critical WL status until tomorrow for several days
Pluvial floods (partly submerged roads, croplands) in some areas within the swamp; San Miguel, San Ildefonso, San Rafael, Candaba; Combination of Pluvial and Fluvial floodings in San Luis, San Simon, Apalit; Flooding persist for several days	
Pampanga River at Sulipan Station; Pampanga Delta areas (Pasac-Guagua Sub-Basin)	Now at 3.05 m. still above the 2.60 m. Alert WL; in fluctuating WL trend to reach the 3.20 m. Alarm WL tomorrow morning (tides & upstream flows); High tide will be at noon time
Coastal & riverside floods (Fluvial) due to high tides & from the relatively upstream river high flows towards the lower sections of Main Pampanga River that affect the riverside areas of: Apalit, Macabebe, Masantol, Calumpit, Paombong and Hagonoy; Pluvial floods (partly submerged roads, croplands) that affect the Pasac-Guagua areas of: Minalin, Guagua, Sasmuan, Lubao, Sto. Tomas and other adjacent coastal towns; Flooding persist in a few days	
The public and the Local Disaster Risk Reduction and Management Councils (LDRRMOs) along the main Pampanga River are advised to undertake preparedness & response activities to mitigate the immediate and ongoing impacts of the prevailing hazards associated with enhanced Southwest Monsoon due to TY Emong; monitor heavy rainfall warnings, weather advisories, and other products issued by PAGASA.	

Prepared by: RPY/RFD

Checked by NBN



JULY HIGH TIDE		
Date	Meter	Feet
24 8:48AM	1.46	4.79
25 9:39AM	1.48	4.86
26 10:30AM	1.43	4.69
27 11:19AM	1.31	4.30