



Republic of the Philippines
DEPARTMENT OF SCIENCE AND TECHNOLOGY
 Philippine Atmospheric, Geophysical and Astronomical Services
 Administration (PAGASA)

PAMPANGA RIVER BASIN FLOOD FORECASTING & WARNING CENTER (PRFFWC) 
 DMGC, Bgy. Maimpis, City of San Fernando, Pampanga 2000, Tel. (045) 652-5175; CP: 0999 336 6416
 websites: pagasa.dost.gov.ph / prffwc.synthasite.com

FLOOD BULLETIN NO. 5		
PAMPANGA RIVER BASIN & ALLIED RIVERS		
ISSUED AT 5:30 AM, 27 JULY 2024		
(VALID UNTIL THE NEXT BULLETIN AT 5:30 PM TODAY)		
Average Basin Rainfall as of 5:00 AM today	Past 24-hr observed Less than 5 mm	Forecast 24-hr basin rainfall Less than 5 millimeters
BASIN'S LIKELY RESPONSE / RELATED IMPACTS		
WATER LEVEL STATION	RIVER / SWAMP WATER LEVEL (WL) TREND AT STATION	POSSIBLE FLOOD SITUATION MESSAGE (POSSIBLE IMPACTS) & AREAS LIKELY TO BE AFFECTED
Rio Chico River at Zaragoza station (Nueva Ecija)	Estimated to be above the 3.00 m Alert WL ; slow recession to begin starting today	Pluvial floods still remain (ponding of rainwater causing several inches of floodwater along roadways & croplands) – La Paz, Zaragoza, San Antonio
Pampanga River at Arayat Station (Pampanga)	Now at 7.29 m, still above the 6.00 m Alarm WL ; slow recession in progress to reach Alert WL status before noon today	Pluvial floods (slightly submerged roads, croplands) still persist; Fluvial flood (River overflow) is still possible in riverside areas - Cabiao, Arayat, San Simon, San Luis
Candaba Swamp Area at Candaba station (Pampanga)	Estimated at more than 0.5 m above the 5.00 m Critical WL ; slow filling-up of swamp waters and to level-off before noon today; very slow recession beginning this afternoon / tonight	Pluvial floods (partly submerged roads, croplands) & Fluvial flood (swamp water / river overflow) to persist in some areas within the swamp; –San Miguel, San Ildefonso, San Rafael, Candaba, San Luis, San Simon, Apalit; Some municipal roads within Candaba swamp (Candaba-San Miguel & Candaba-Baliuag roads) are no longer passable to all types of vehicles
Pampanga River at Sulipan Station ; Pampanga Delta areas (Pasac-Guagua Sub-Basin)	Now at 2.93 m, above the 2.60 m Alert WL ; very slow fluctuating rise to continue and likely to reach within the 3.20 m Alarm WL by noon today	Pluvial floods (partly submerged roads, croplands) persist – Plaridel, Pulilan, Baliuag; Coastal / riverside floods (Fluvial) due to tide effects & relatively high upstream river flows towards the lower sections of Main Pampanga River affecting riverside areas of: Apalit, Macabebe, Masantol, Calumpit, Paombong and Hagonoy; Pluvial floods still remain w/in the Pasac-Guagua areas: Minalin, Guagua, Sasmuan, Lubao, Sto. Tomas and other adjacent coastal towns
The public and the Local Disaster Risk Reduction and Management Councils (LDRRMOs) along the main Pampanga River & within the Candaba swamp area are advised to maintain & continue the appropriate actions / activities to mitigate the ongoing impacts of the prevailing hazards still associated with the SW Monsoon ; monitor possible thunderstorm advisories , and other products issued by PAGASA.		

Prepared by: **NBN / GHH**

Checked by: **HTH**

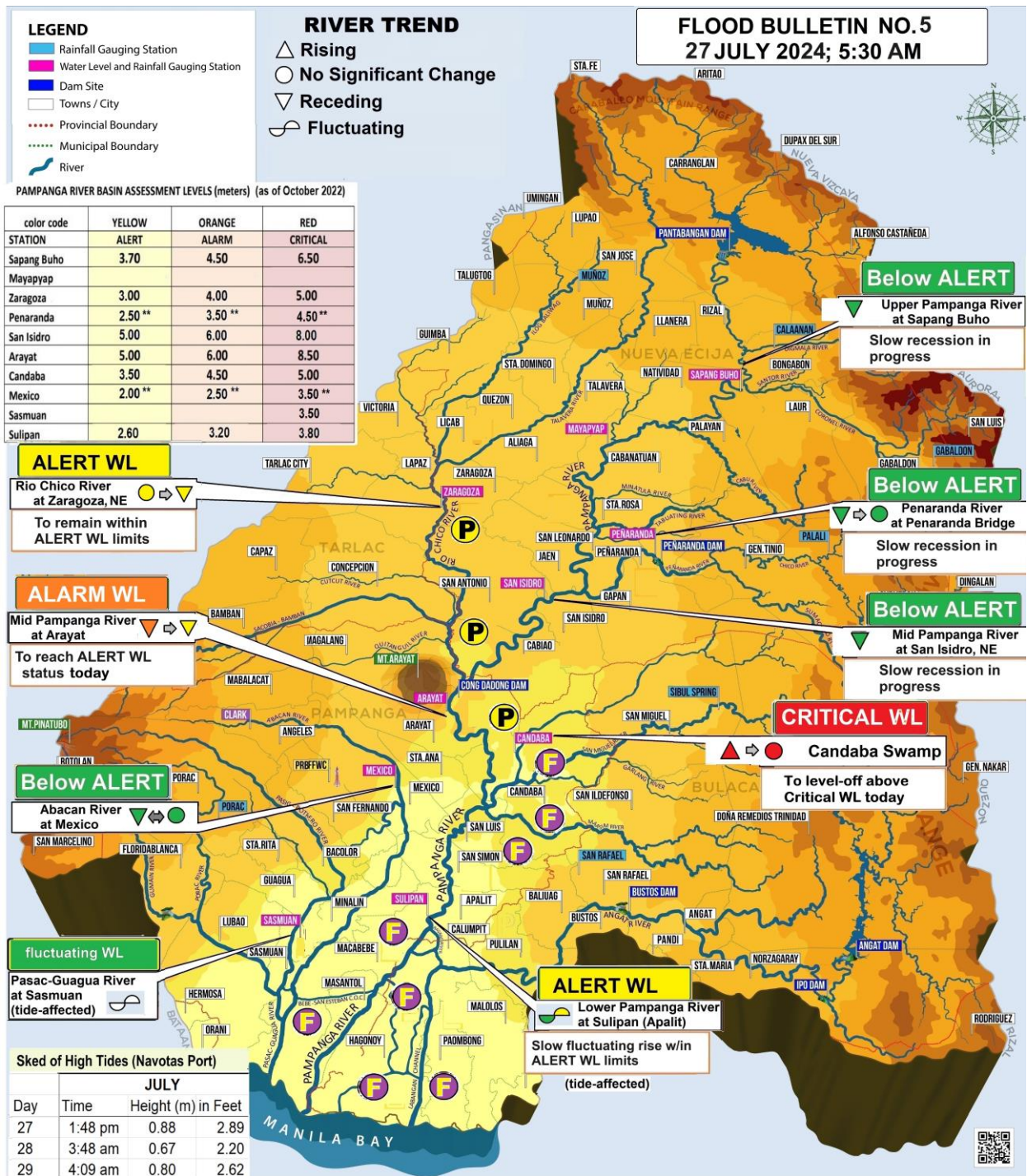
"tracking the sky...helping the country"

Science Garden Compound, BIR Road, Brgy. Central, Quezon City, Metro Manila, Philippines 1100

Tel. No. (02) 8284-08-00
 Website: <http://bagong.pagasa.dost.gov.ph>



Pampanga River Basin HYDROLOGICAL Forecast Scenario map for the period:



FLOOD SITUATION: P Possible T Threatening O To Occur F Persist

"tracking the sky...helping the country"

Science Garden Compound, BIR Road, Brgy. Central, Quezon
 Metro Manila, Philippines 1100
 Postal Address: P.O. Box 3278 Manila

City, Tel. Nos. (632) 929 48 65; (632) 434 90 40
 Fax: (632) 929 48 65
 Website: <http://bagong.pagasa.dost.gov.ph>